

How long have you lived in Neenah? (n=45)		
0-1 year	0.0%	0
1-2 years	0.0%	0
3-5 years	13.3%	6
6-10 years	6.7%	3
11-20 years	24.4%	11
20 or more years	40.0%	18
I don't live in Neenah	15.6%	7
Do you own or rent? (n=45)		
Own	70.5%	31
Rent	11.4%	5
Other	18.1%	9
Age of Participant (n=45)		
Under 18	2.2%	1
18-24	4.4%	2
25-34	13.3%	6
35-44	11.1%	5
45-54	22.2%	10
55-64	26.7%	12
65 or older	20.0%	9
Participant Sex (n=45)		
Male	70.5%	31
Female	29.6%	14

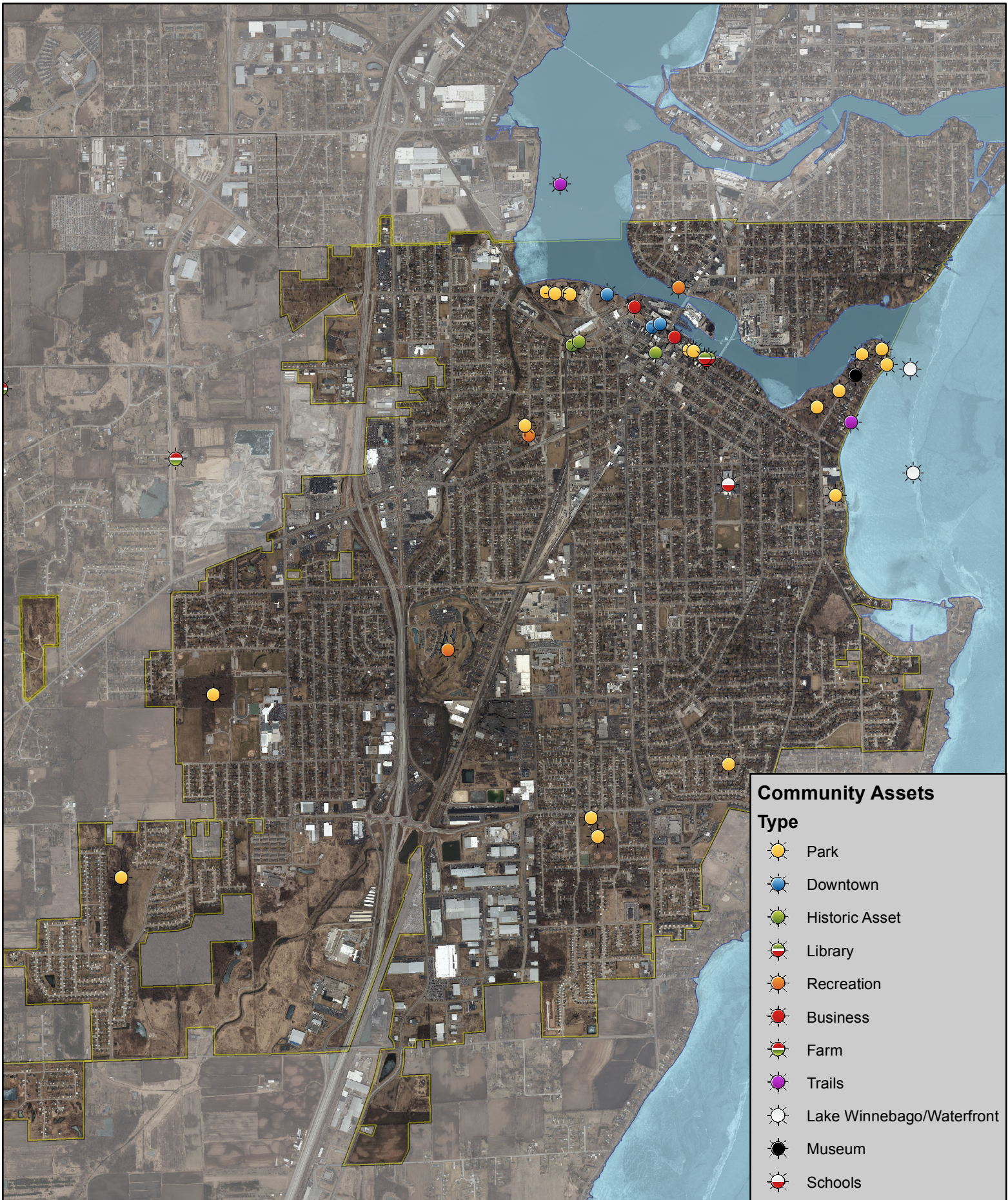
Public Input

- Asset
- Issue

Comprehensive Plan 2040 Assets & Issues - Interactive Map

Created: Nov. 11, 2016



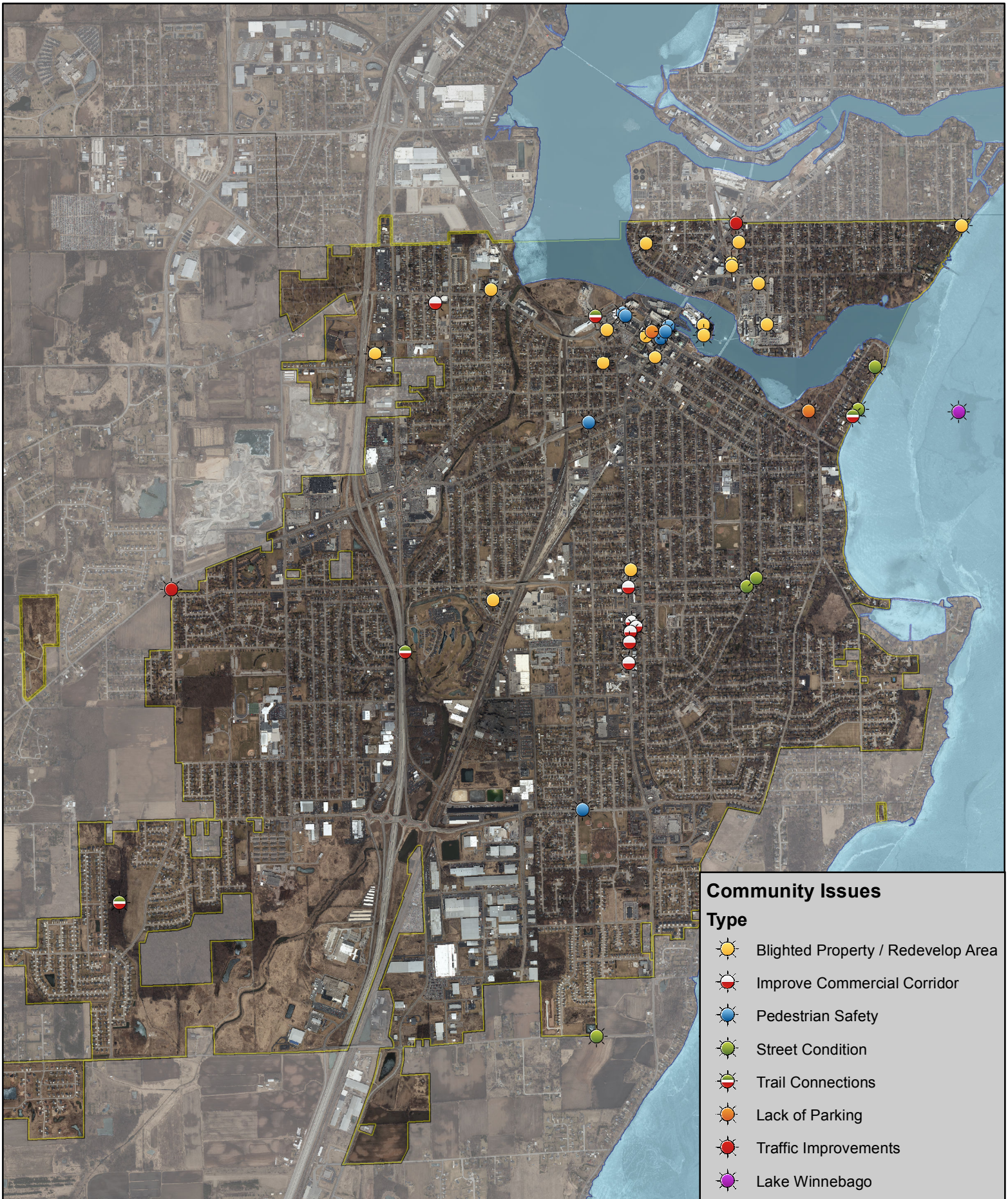


Comprehensive Plan 2040

Community Assets - Interactive Map

Created: Nov. 11, 2016





Comprehensive Plan 2040

Community Issues - Interactive Map

Created: Nov. 11, 2016

