



NeenahNotes

In This Issue:



Santa Claus is Coming!

The Neenah-Menasha Fire Rescue's all-new Santa Float will begin making its nightly rounds soon!

PAGE 3

Celebrate with Recycling in Mind

Learn to make the holidays easier on our environment.

PAGE 4

2024 PROPERTY TAXES

PAGE 6

COMMUNITY POLICING CORNER

PAGE 7

NEENAH PUBLIC LIBRARY

PAGE 8

PARKS & RECREATION

PAGE 11

BERGSTROM-MAHLER MUSEUM OF GLASS

PAGE 13

MESSAGE FROM THE MAYOR

Hello Friends and Neighbors,

The fall season is a good time for us to be reflective on the many reasons we have to be thankful here in the City of Neenah. As we look beyond our own surroundings and situations, we are mindful of the fact that there is a great deal of turmoil throughout the world. Conflicts in the Middle East and in Ukraine are constantly on our minds, and we continue to hope for resolution to these multi-generational disputes. In stark contrast, our corner of the world continues to be a safe and secure place for us to raise our families and enjoy the good things that life offers. Although disagreements and different perspectives are to be expected here in our wonderful community, we truly have so much for which to give thanks.

Our fall has been a busy one throughout the city and featured the final months of the excellent Farm Market season that is orchestrated and organized by our friends at Future Neenah. One of the special moments for me this fall was the

opportunity to help with my Rotary Club as we provided games for children at the final Saturday of the market on October 14th. What made it more special was the fact that six Rotary exchange students representing six different countries were able to join us and learn a bit about what makes Neenah a great place. The students truly enjoyed participating in many activities and seeing the sights around Neenah, including The Plaza which they all thought was very impressive. When we step outside of our own perspective and view our community through new eyes, it's truly amazing to discover what a blessing it is to live here.

Earlier in the month of October, we hosted the 2nd Annual Mayor's Run/Walk for charity along with the Neenah Menasha Fire Rescue and Local 275. The day was cold and windy, but over 100 families participated in the 5k walk on the Loop the Lake Trail. This year's designated charity was the Children's Hospital of Wisconsin to support local families in need, and over \$5,000 was raised to help. Again, our health and the



Rotary Exchange students from India, France, Denmark, Italy, Brazil, and Japan.

CONTACT US

MAYOR

Jane Lang | 920-886-6104
jlang@neenahwi.gov

CITY ATTORNEY

David Rashid | 920-886-6106
attorney@neenahwi.gov

CITY CLERK

Charlotte Nagel | 920-886-6100
clerk@neenahwi.gov

COMMUNITY DEVELOPMENT & ASSESSMENT DIRECTOR

Chris Haese | 920-886-6125
chaese@neenahwi.gov

FINANCE DIRECTOR

Vicky Rasmussen | 920-886-6140
vrasmussen@neenahwi.gov

FIRE CHIEF

Kevin Kloehn | 920-886-6200
kkloehn@nmfire.org

COUNTY HEALTH DEPARTMENT

Neenah Office | 920-727-2894
health@co.winnebago.wi.us

HUMAN RESOURCES & SAFETY DIRECTOR

Amy Fairchild | 920-886-6102
afairchild@neenahwi.gov

INFORMATION SYSTEMS DIRECTOR

Joe Wenninger | 920-886-6170
jwenninger@neenahwi.gov

LIBRARY DIRECTOR

Nicole Hardina-Wilhelm | 920-886-6300
director@neenahlibrary.org

PARKS & RECREATION DIRECTOR

Mike Kading | 920-886-6060
mkading@neenahwi.gov

POLICE CHIEF

Aaron Olson | 920-886-6000
aolson@neenahwi.gov

PUBLIC WORKS DIRECTOR

Gerry Kaiser | 920-886-6240
gkaiser@neenahwi.gov

WATER UTILITY DIRECTOR

Anthony Mach | 920-886-6180
amach@neenahwi.gov

MENASHA-NEENAH MUNICIPAL COURT

Municipal Court Clerk | 920-886-6285

CITY COUNCIL – DISTRICT 1

Kathie Boyette | 920-558-3410
kboyette@neenahwi.gov

Cari Lendrum | 920-850-2433
clendrum@neenahwi.gov

John Skyrms | 920-383-1973
jskyrms@neenahwi.gov

CITY COUNCIL – DISTRICT 2

Dan Steiner | 920-637-4685
dsteiner@neenahwi.gov

Tami Erickson | 920-740-4080
terickson@neenahwi.gov

Brian Borchardt, Pres. | 920-205-3926
bborchardt@neenahwi.gov

CITY COUNCIL – DISTRICT 3

Todd Stevenson | 920-722-5440
tstevenson@neenahwi.gov

Scott Weber | 920-216-0218
sweber@neenahwi.gov

Lee Hillstrom | 920-722-0774
lhillstrom@neenahwi.gov

Lighthouse cover artwork courtesy of Henri Miles

MESSAGE FROM THE MAYOR



health and wellbeing of our families is always a priority, and it is wonderful to know that we have the highest quality health care available right here in our own community.

Speaking of promoting health, we were very excited that Neenah's own Plexus Corporation won this year's Wisconsin Manufacturers and Commerce contest for the "Coolest Thing Made in Wisconsin" for the Bevi water dispenser they manufacture. This unique dispenser provides nearly endless varieties of water as well as drastically reducing the use of plastic water bottles. We're incredibly proud of Plexus and their history in Neenah as an innovator and contributor to what makes Neenah an exceptional community.

The fall also brings with it the city's budget process, and although the process actually begins in the summer for our department heads, the budget is not finalized until it is reviewed and approved by the city council in mid-November. As you are aware, we underwent a revaluation process within the city during the summer. A property revaluation is required by the State of Wisconsin statute to be conducted whenever property values fall either ten percent above or below the market value of homes within the city. The shortage of housing coupled with the high cost of building new has resulted in a housing market that has greatly increased all our home values. It is getting increasingly difficult for all of us to deal with the high rates of inflation that have plagued us over the past few years.

To that end, I worked diligently with our Finance Director and Deputy Director to create a fiscally responsible budget for the city that will continue to provide excellent services to our community. That budget, as I previously stated, has been presented to the City Council for its review and modification as they deem appropriate. Last year's tax rate was set at \$8.75 per \$1,000 of property value. This year's tax rate was proposed to the council to be set at \$6.57 per \$1,000. We also will be simultaneously reducing our debt load, so we feel confident that this budget will be a positive one for all of us.



MESSAGE FROM THE MAYOR

Finally, as we look forward with anticipation to 2024, I'm mindful of the fact that so many individuals have personally helped and encouraged me throughout 2023. Our staff at the City of Neenah is exceptional. They strive every day to make a positive difference in our community, and I'm incredibly grateful for them. There are so many others including those who serve on city committees and commissions, those who serve on city council, those who volunteer

their time for the many wonderful organizations within our community, and countless additional people who are simply trying to do their best to serve others and put community needs above their own. One group for whom I'm particularly grateful, is the Arrowhead Task Force team who have worked with RDG Planning and Design over the past year to establish an exciting plan for these thirty acres of land adjacent to our downtown. The opportunities are significant. We

look forward to sharing the final plan before the end of the year, and we anticipate more activity on the site to begin in 2024.

We, at the City of Neenah, hope that you will enjoy this season of reflection and gratitude as we wrap up 2023 and look forward with optimism and excitement for the new year.

With gratitude,
Mayor Lang

NEENAH-MENASHA FIRE RESCUE



Rendering of the new Santa Float

Neenah-Menasha Firefighters have been carrying on the Santa Float tradition that dates back to the early 1950's. The firefighters volunteer their time on days off to operate the float. All costs associated with the float are funded 100% by donations.

In November of 2022, Neenah-Menasha Firefighters launched a campaign to build a new Santa Float because the 26-year-old trailer was due for a major overhaul. Fire-

fighters had a vision to build a new extravagant Santa Float that will last another 30 years. The goal was to raise enough money to go as big as possible with the new float yet be able to navigate the trailer in neighborhoods and fit in the fire station!

The fundraiser was a success with overwhelming support from the community. Firefighters have been working diligently throughout the year to make this vision a reality.

They were even able to incorporate some secret features that won't be revealed until December. Santa will begin his routes December 4 on the Northside of Menasha and finish on Neenah's Southside December 15th. The Santa float travels 2-3 hours each night for a total of nearly 150 miles!.

Routes will be posted on
www.nmfire.org and updates are
available on Facebook.

Use the Right Amount of Salt or De-icers to Reduce the Environmental Impact This Winter

The use of salt or ice melt products on our sidewalks and driveways is a common winter practice in Wisconsin. Ice on walking surfaces is a slip & fall safety hazard, but the overuse of salt is also a threat to the environment.

The salt or de-icer we use eventually ends up in our ground water or is washed into the street down the storm sewer and into the lake. Chlorides can harm plants and aquatic life. Locally this presents a risk to Lake Winnebago which holds a unique population of lake flies which support the fish and sturgeon.



How can you help?

Some guidelines are:

- **Shovel before salting.** Physically removing the snow and ice eliminates, or greatly reduces the need for salt and de-icers.
- **Consider the use of sand** for traction especially at the beginning or end of the winter season when the sun helps to melt the ice. Or when it's below 15°F, which is the temperature where salt is less effective.
- If salt or de-icer use is necessary, **learn how much is the right amount.** Resources like the Wisconsin Salt Wise organization suggests keeping 3 inches of space between salt grains. Depending on the de-icer type, one to four pounds per 1,000 sq ft is adequate. Another guideline is a 12 oz cup for a single lane 20-foot driveway.
- **Reuse the unused salt.** If unused salt remains on the walking surfaces after the ice is gone, sweep it up and use it the next time.
- **Be aware of the product you're using.** Salt is sodium chloride. If the de-icer or salt alternative contains magnesium chloride, potassium chloride, or calcium chloride they are still in the chloride family and can be harmful to the environment.

Using the right amount of de-icer provides safety, reduces the impact on the environment, and saves us money.

Celebrate the Holidays with Recycling in Mind

Happy Holidays to everyone from the Sustainable Neenah Committee! It is the time of year for celebrations, decorations, giving and receiving of gifts. With a little preplanning you can offer recyclable gift wrapping and make sure our decorations are disposed of safely and properly.

Giving can come with containers and wrappings that are not always obvious if they are recyclable. Here are tips to make your recycling and waste decisions a little less stressful.

Holiday Lights

Holiday light strings are recyclable at drop off locations and by mail.

The City of Neenah takes part in the Winnebago County Holiday String Lights Recycling Program. There will be a holiday string light collection box in the lobby at City Hall, 211 Walnut Street for Neenah residents from December 1, 2023, to January 31, 2024.

Krueger True Value hardware store has a collection drop off box year-round. There is also a year around mail-in service located in Sussex, Wisconsin www.holidayleds.com/free-light-recycling

Never place holiday string lights in your curb-side recycling bins. String lights and electrical extension cords will tangle in conveyors and jam sorting equipment used at the material recovery centers where recyclables are separated.

If you miss the holiday collections, you also have the option of the twice-annual electronics recycling drop-off held in May and October at the City Services Building, 1495 Tullar

Attention Businesses Owners!

Don't like submitting your Statement of Personal Property every year? Well, recently enacted state legislation (AB 245 aka 2023 Wisconsin Act 12) has eliminated the Wisconsin business personal property tax beginning January 1, 2024. The assessor's office will be posting information on our website in November and December as local assessors and Department of Revenue finish ironing out some procedural issues. Stay tuned. Please note this does not affect the 2023 Personal Property assessment or resulting 2023 PP tax bill.



Road. See www.neenahwi.gov for details.

Wrapping Paper and Boxes

Most wrapping paper and boxes are recyclable. Here are a few thoughts to keep this in mind while buying your gift wrapping:

RECYCLABLE WRAPPING PAPER

- Wrapping paper can be recycled in your curbside bin if it is colored printed paper, flat or glossy (Remove bows and ribbons)
- Cardboard and boxboard are recyclable in your curbside bin

NOT RECYCLABLE

- Metalized or foil wrapping paper is not recyclable
- Paper with glitter
- Tissue paper
- Bows and ribbons made of plastic are not recyclable and need to be removed
- Paper that is balled up or placed in plastic garbage bags

To recycle wrapping paper, it should be placed flat and loose in your curbside bin. The same for boxes, break them down. The separating machinery is designed to manage flat sheets of paper. Do not roll it up in a crinkled ball, and never use plastic

garbage bags to hold your recyclables in your curbside bins.

Alternate Packaging Thoughts

Consider some alternative ways to wrap presents this year—buy a nice holiday towel to use as wrapping.

Gift baskets, or reusable gift bags and boxes can be saved as they are meant to be used more than once!

Or make your own wrapping paper with old calendars, comic pages from the newspaper, printed shapes on white or brown craft paper—this can become a fun family art project!

Styrofoam

Use plastic bubble type wrap, or paper packing which is recyclable. Try to avoid Styrofoam packing peanuts when shipping gifts.

If you do receive Styrofoam inserts from packaging it can be recycled by a drop off known as the “Foam Dome,” located at Outagamie Material Recovery Centers at 1919 Holland Road (Gate #3), Appleton. The Foam Dome is part of the Tri County Recycling Partnership and Winnebago County residents are welcome. Note that the Foam Dome does not accept foam packaging

peanuts. Never place Styrofoam in your curbside recycling bin.

Christmas Tree Pickup

In January the City of Neenah Public Works Department will post a pick-up schedule for natural Christmas trees placed on the terrace. Please make sure all decorations, tinsel and lights are removed. The trees will be recycled into wood chips and mulch.

Batteries

Batteries should never be placed in your curbside recycling bins. Rechargeable batteries are the largest causes of fires in material waste sorting facilities and should be recycled by use of drop off locations at larger electronics stores or the City of Neenah’s twice-a-year electronic recycling drop-off event.

Disposable batteries are not currently collected or recycled locally, and the Winnebago County Solid Waste website directs us to dispose of these in your waste bin.

Overall

If you still have questions, help is readily available through the Waste Wizard feature on the Tri County Web Site: recyclemoretricity.org/waste-wizard/

Or:

There is a phone app available called “Better Bin” (also described on the Tri County Web site): recyclemoretricity.org/betterbin/. The Better Bin app is free and available for iPhone and Android devices.

Always minimize the use of wrapping paper, consider reusable options, please reduce food waste, and recycle what you can. Happy Holidays!

Annual Property Tax Information

Property tax bills will be mailed out approximately mid-December. If your tax bill mailing address has changed, please submit your address change via the City's website: www.neenahwi.gov. You can also view your tax bill and any payments applied to your taxes on the City of Neenah's website. Go to Residents and click Property Information.

PROPERTY TAX DUE DATES

- 1st installment or in full due date: Jan 31, 2024
- 2nd installment: Mar 31, 2024
- 3rd installment: May 31, 2024
- 4th installment: Jul 31, 2024

Make checks payable to:

City of Neenah

Mail to: PO Box 582,

Neenah WI 54957-0582

TAX COLLECTION SITES

City Hall

211 Walnut Street, Neenah;

920-886-6144

Hours: Mon–Thu, 7:30am–4:30pm;
Fri, 7:30am–4pm. Our office will be closed on Mon & Tue, Dec 25 & 26, 2023, and Mon, Jan 1, 2024.

A payment drop box is available behind City Hall at the drive-up window location for after-hours convenience. If a receipt is requested, please enclose a self-addressed, stamped envelope.

Tax payments can also be made at the following financial institutions through Jan 31, 2024:

Associated Bank

Escrow check refunds allowed

- 100 W Wisconsin Ave (lobby only)

BMO Harris Bank

Escrow check refunds allowed, only with a customer account

- 643 S. Green Bay Rd

Community First Credit Union

Escrow check refunds allowed

- 1193 Winneconne Ave
- 125 E Forest Ave
- 2300 Industrial Dr

DID YOU RECEIVE YOUR LOTTERY AND GAMING CREDIT?

If you DO NOT have a Lottery/ Gaming credit on your tax bill, you may still be eligible. To qualify for the credit, your primary residence must be in Wisconsin and be owner occupied on January 1 of the tax year. This is a State of Wisconsin program that is facilitated by the City of Neenah. Forms are available in the Treasurer's office or online at www.revenue.wi.gov/forms/lottery.

PAYMENTS

Escrow checks

If you are paying with an escrow check, please make sure your check is properly endorsed. Checks will not be accepted for payment if signatures are missing.

Credit card/e-check payments

For your convenience, you may pay your tax bill online at www.neenahwi.gov or by calling 1-844-309-5946. Service fees will apply.

NSF checks

There is a \$35 fee charged on all returned payments.

Receipts

If payment is made by mail and you would like a receipt, please enclose a self-addressed, stamped envelope.

Refund policy

If your mortgage escrow check is larger than the amount of your tax bill, the full amount of your check will be applied to the tax bill and a refund check will be issued within 30 days. Cash refunds of \$50 or less will be given at the City Treasurer's office. The designated financial institutions listed will issue refunds immediately for payments over the full tax bill. Identification or depository account may be required.



Pet licensing

All dogs and cats over 5 months of age are required to be licensed in the City of Neenah. The fees are: \$8 for altered pets and \$13 for unaltered pets. A \$5 late fee will be imposed if the license is purchased after March 31, 2024. A valid rabies certificate is required annually to license your pet. Payment and an application can be submitted on the City of Neenah's website. If submitting online, the license and tag will be mailed when processed.

Fire Permit Renewal Process

We are now issuing fire permits for 2024. The cost of the 2024 fire permit is \$17. Fire permits can now be obtained on the City of Neenah's website under Finance Department or in the office. An electronic application is filled out and the email confirmation is the permit. If you don't have an email address, a receipt will be printed for you; this can be done in the office or mailed in with a self-addressed stamped envelope.

Utility Billing

Visit us online at www.neenahgov.org/neenahutilities to access the following options:

View Your Account...

Sign Up Online to

- View invoices.
- View consumption history.
- Make payments.
- Stay tuned for new features in the coming months.

Start or Stop Service

- Let us know online if you are moving in or out of a property.
- Schedule a date for a final or initial meter reading.
- Provide us with the correct information for your utility account.

Sign up for Automatic Payment Withdrawal

Have your payments automatically withdrawn from a checking or savings account on your utility invoice due date.

Online Utility Invoice Payment Options

- Pay online with a credit card (\$2.99 fee).
- Pay online with Echeck (\$0.99 fee).

Park, Quarry Park, and Island Park. Ice-skating is offered at the Neenah Plaza and Washington Park. Cross country skiing is allowed in any park. Trails are available at Memorial Park, Southview Park, and Riverside Park.

Neenah PD has a good amount of donated winter hats and blankets. Simply call Officer Joe Benoit at 920-886-6022 if you, your family, or someone you know needs these. If you or your group would like to schedule a tour of the police department during the winter months, give Officer Benoit a call to set that up.

Last on the list for Community Policing, an important reminder for parents and kids to be on their best behavior so they don't get coal in their Christmas stocking!

Crime Prevention Notes

- Follow the "9 PM routine" by double checking your vehicles, garage, and house are locked every night.
- Install motion lights, and/or security cameras if you are able.
- Report any suspicious activity as soon as you become aware of it by calling our front desk at 920-886-6000 or dial 911 if it is currently happening.

Winter Driving

Take it slow, allow additional distance between you and the vehicle in front of you, and double check the tread depth on your tires.

Don't hesitate to call us with any questions. Remember, we still make house calls and are happy to come chat with you at your request.

Wishing you a wonderful winter,

—Officer Joe Benoit

Neenah Police Department
Community Policing Coordinator

NEENAH POLICE DEPARTMENT



Community Policing Corner

Welcome to winter, Neenah! Primary goals of Community Policing in Neenah are strengthening the relationship between citizens and the police department, and educating the public in crime prevention, minimizing the opportunity for a crime to be committed.

Neenah Police Officers look forward to seeing young and elderly alike out enjoying wintertime fun. Officers will meet and greet with park patrons and may even don a pair of ice skates or take a run down a sled hill. Sled hills are located at four of our parks: Memorial Park, Washington

Adult Programs

UGLY CUPCAKE PARTY

Sat, Dec 2, 7pm

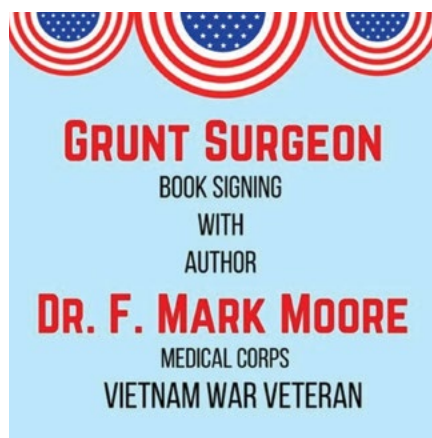
With national best-selling author **Sara Richardson** (aka Eliza Evans) and cupcake queen **Amanda Cupcake**. At this special after-hours event, Sara will read selections from her book **The Christmas Café**, and have signed copies available for purchase. Bring a cupcake (store-bought or homemade) to participate in the Ugly Cupcake Competition! Featuring prizes for Best Decorated, Most Festive, Ugliest, and more. For ages 18+.

THE HIDDEN HISTORY & MYSTERY BEHIND CHARLES DICKENS' A CHRISTMAS CAROL

Mon, Dec 4, 2pm

In the Shattuck Room

With author, speaker & award-winning columnist **Rochelle Pennington**. Explore the hidden history behind Dickens' 1843 classic. Learn what inspired it, who it was for, and how it "single-handedly resurrected" Christmas as we know it today, through the immortal characters of Ebenezer Scrooge, Jacob Marley, and a trio of Christmas ghosts.



GRUNT SURGEON

Mon, Dec 4, 6:30pm

In the Shattuck Room

With author **F. Mark Moore**.

Join the Neenah Public Library and Dr. F. Mark Moore as he talks about his time serving in the medical corps

during the Vietnam War. There will be plenty of time for questions and for local veterans to share their own experience. Dr. Moore will have signed copies of his book **Grunt Surgeon** for sale.



DORMANT SEASON

Tue, Jan 23, 7pm

In the Shattuck Room

With photographer **Erinn Springer**.

As seen in *The New Yorker*, join award-winning Wisconsin photographer Erinn Springer as she unveils photographs from **Dormant Season**, featuring rural landscapes and people of Wisconsin in splendid black and white. Learn about the origins of the project, tips for photographers, and more. Copies of her book will be available for purchase.

HOUSEPLANT CARE

Wed Jan 31, 6:30 pm

In the Shattuck Room

Join local Master Gardeners to learn how you can keep indoor plants thriving through late winter. You will learn how to recognize common pests on indoor plants and management options. We will also discuss maintenance practices to minimize indoor plant problems and keep your plants growing healthy.

READ LIKE AN EGYPTIAN: AN INTRODUCTION TO HIEROGLYPHS

Mon, Feb 5, 2pm

In the Shattuck Room

With Director of the Center for Norbertine Studies and Professor

of Classical Studies at St. Norbert College, **Dr. Michael Holstead**. Embark on a captivating voyage through the wonders of ancient Egyptian hieroglyphs. Explore the basics of the hieroglyphic script and learn the common names, words, and phrases that appear on Egyptian artifacts and monuments.

MONDAY MORNING BOOK KLATCH DISCUSSION GROUP

Discussions begin at 10am

- **Dec 18: *Happiness for Beginners*** by Katherine Center
- **Jan 22: *Measure*** by Nikki Erlick
- **Feb 26: *Remarkably Bright Creatures*** by Shelby Van Pelt

MONDAY MATINEES

Second Monday of the month, 1pm

In the Shattuck Room

Free admission and free refreshments. Call 920-886-6315 for the movie title, or see our events calendar online.

SHORT STORY NIGHTS

Mondays, Dec 11, Jan 8, Feb 12, 7pm

At Lion's Tail Brewing Company. Featuring comedy, trivia, and yes, even literary discussion, this is the perfect book club for people who don't have time for a book club! Read the story before meeting. Copies are available at the Library.

NOT QUITE COZY MYSTERY BOOK CLUB

Mondays at 6:30pm

- **Dec 18: *The Graveyard Book*** by Neil Gaiman
- **Jan 15: *Killers of a Certain Age*** by Deanna Raybourn
- **Feb 19: *The Violin Conspiracy*** by Brendan Slocumb



TECH TALK TUESDAY

Talks begin at 1:30pm

- **Dec 12: *Guide to Online Shopping and Security***
- **Jan 9: *Just the Ticket: How to Navigate Online Travel Websites***
- **Feb 13: *Digital Photo Editing and Design Tools***

THE NEXT CHAPTER

*In which we fail to hide
our giddiness over
the wealth of newly
released books!*



THE NEXT CHAPTER

Tuesdays, Jan 9 & Feb 13, 7pm

(Note: Dec 12 event is cancelled)

A virtual conversation about books.

Join us live on Facebook!

MOVIE TALKS

Movies begin at 6:30pm

Learn information about the plot, characters/actors, and some behind-the-scenes trivia. Intended for those who have already seen the movie.

- Tue, Jan 30: **Insomnia** (2002)
Starring Al Pacino, Robin Williams & Hilary Swank
- Tue, Feb 27: **Casablanca** (1942)
Starring Humphrey Bogart & Ingrid Bergman

MAH JONGG MEETUP

Wednesdays, 5:30–8:30pm

(No Mah Jongg Dec 20 & 27)

In the Storytime Room

All skill levels welcome. A few Mah Jongg sets will be provided, along with cards. If you have your own Mah Jongg card, please bring it.

Free, open to all.

Visit us online at

neenahlibrary.org

for the most up-to-date
information. We are always
adding something new!

OPEN CHESS

Thursdays, 5:30–8:30pm

On the second floor

All ages and skill levels are welcome!
Chess sets provided. Coaching and
beginner help is available.

CHAIR YOGA

Alternate Fridays, Dec 1 & 15,
Jan 5 & 19, Feb 2 & 16, 10:30–11am
Engage your core doing full body
movements while sitting down.

FITNESS FRIDAY

Classes begin at 9:15am

Bring your water bottle, and yoga
mat or towel. Classes taught by
Nicole Schommer from Absolute
Wellness.

- Dec 1: **Boot Camp**
- Dec 15: **Balance and Strength**
- Jan 5: **Boot Camp**
- Jan 19: **Balance and Strength**
- Feb 2: **Boot Camp**
- Feb 16: **Balance and Strength**

Neenah Public Library Concert Series

Sundays at 2pm

FREE concerts

approximately 1 hour long



Sun, Dec 17, 2pm

Encore! Handbell Ensemble

Beautiful music focusing
on the art of handbells and
chime ringing.



Sun, Feb 18, 2pm

The Crystal River Trio

This talented trio magically
weaves a diverse program
of Irish ballads, sea shanties,
calypso, oldies, and folk
music with history and
humor.



FRIENDS OF THE NEENAH PUBLIC ANNUAL MAGAZINE SALE

Sat, Jan 27 10:30am–3:30pm

Magazines are 25¢ each/five for \$1.00

Sun, Jan 28, 12 noon–4pm

Any remaining magazines are free

Proceeds from the sale benefit
Neenah Public Library programs,
services, and resources. Magazine
donations can be dropped off during
Library open hours.

INAUGURAL GAMES TRIATHLON

Sat, Jan 20, 4:30pm

FREE—registration required

Registration starts Dec 11, 9am

How it works: Teams of up to four
will have 90 minutes to complete
three games: a reverse word search,
a Sudoku puzzle, and a logic puzzle.
At the start of the competition, each
team receives a reverse word search.
Once they complete it, the teams
will receive the Sudoku and, lastly,
the logic puzzle. Prizes awarded for
speed and accuracy.

Details: Team captain registers for
the team. Teams may have up to
four players. The captain will be the
primary contact for the event.

Youth Programs

STORYTIMES

Jan 8-Feb 23

Baby Time ages 0-12 months
Wednesdays, 9:15am

Toddle Time ages 12-24 months
Tuesdays, 10am

Wee Read ages 2 and up
Thursdays, 10am

Storytime for Everyone all ages
Tuesdays, 10am at Valley VNA

Musical Movers all ages
Wednesdays, 10am



TWEEN CREATE SPACE

Tuesdays at 3:30 pm
For ages 9 and up

- Feb 6: **Origami Animals**
- Feb 20: **Robot Hands**
- Mar 5: **Bath Bombs**
- Mar 19: **Connect Circuits**

Family Programs



FOOTLOOSE FRIDAYS

Fridays, Dec 8, Jan 12 & Feb 9,
10:30 am

Family dance party! Boogie down with interactive songs, scarves, shaker eggs, and fun music.

BOARD GAMES & BAKED GOODS

Mondays, Jan 15 & Feb 19,
9am–noon

School-age kids and their caregivers can play board games while enjoying coffee and treats provided by Sweet Lair Cafe.



STUFFED ANIMAL CLINIC

Sat, Jan 20, 10:30–11:30am

Where do stuffed animals go when they need a check-up? The library of course! Kids ages 3 and up can bring a stuffed animal from home for their annual well-animal “check-up” performed by trained professionals. (no actual mending will be done)

9TH ANNUAL AFTER-HOURS CAMPOUT

Fri, Feb 9, 6:30–7:30pm

Families can bring blankets and a flashlight, make a fort, curl up and read! S’more snacks and supplies to make shadow puppet crafts will be provided.

LEGOS IN THE LIBRARY

1st & 3rd Sundays of the month,
1–3pm

Build-a-Lego creations with the library’s Legos.

February Read-With-Me Challenge

Begins Jan 27
For ages birth–4

Read 100 books with your little one in February to earn a free book! Pickup your reading record at the Youth Desk starting January 27.

Learn more at neenahlibrary.org



Winter/Spring Activity Guide

The Neenah Parks and Recreation Department's Winter/Spring Activity Guide will be posted online and sent to all city residents in late November. The Guide includes youth and adult activities and parks and facilities information for the winter/spring months. Guide copies will be available for pick up at the City Hall Parks Office and Neenah Library second floor reference desk, or online at www.neenah.gov. Registration for all programs is accepted in person and online. Park shelter reservations are accepted by calling, emailing parkrec@neenahwi.gov, or visiting the Parks and Rec office.

Shattuck Park Boat Stalls

Summer 2024 Season: May 1–Nov 1

PRIORITIES FOR APPLICANTS

- **Beginning Jan 2:**
2023 City of Neenah resident renters for the stall they occupied last season, or for a stall previously occupied by a non-resident.
- **Beginning Feb 12:**
Any City of Neenah resident for any vacant stalls.
- **Beginning Feb 19:**
Non-resident renters from 2023 for any stalls still available.
- **Beginning Feb 26:**
All other applicants.

Rental rates range from \$365–\$460. Applications are available on the Park & Rec website under Boating Information, or in our office on the 2nd floor of City Hall.

2024 Summer Job Opportunities!

Spend Your Summer Outdoors!

JOIN OUR TEAM

Apply online through Feb 1

- (18+) Parks & Cemetery Maintenance
- (15+) Pool: Lifeguards, Concessions & Admissions Clerks
- (15+) Youth Sports & Playground Leaders

Starting wage: \$12.00

Upcoming Recreation Activities

| ACTIVITY | DATE | OPEN TO |
|---|-------------------------------------|---------------------|
| Friday Night Kids Party | Dec 1, Feb 9 | Ages 5-11 |
| Parent/Child Painting with Rooster Dreams | Dec 2, Jan 13, Feb 17 | Ages 5+ |
| Fridays with Friends | Jan 5, 12, 19, 26; Feb 2, 9, 16, 23 | Ages 3-5 |
| Yoga | Classes begin Jan 2 | Ages 18+ |
| Karate | Classes begin Jan 6 | Ages 4-12 |
| Start Smart Sports | Classes begin Jan 6 & Feb 3 | Ages 3-5 with Adult |
| Zumba | Classes begin week of Jan 8 | Ages 18+ |
| Snowshoeing & Animal Tracking Hike | Jan 12 | Grades 1-5 |
| Babysitting | Jan 15 | Ages 10-15 |
| Youth Pizza Palooza | Jan 15 | Ages 8-12 |
| KidStage | Class begins Jan 17 | Ages 5-12 |
| 2's on the Move! | Jan 22 & 29; Feb 26 & Mar. 4 | Age 2 with Adult |
| Puzzle Pursuit | Jan. 26 | Ages 21+ |
| Tai Chi | Classes begin Jan 30 | Ages 18+ |
| Learn to Bowl | Classes begin Feb 26 | Ages 6-17 |

2024 Elections

February 20, 2024

Primary (if needed)

April 2, 2024

Presidential Preference Primary
& Spring

August 13, 2024

Partisan Primary Election

November 5, 2024

General (Presidential) Election

There are no remaining elections
for 2023.

ABSENTEE BALLOTS

Requests for absentee ballots for
the 2024 elections can be made
after January 1 at myvote.wi.gov

Photo ID must be on file at to
receive an absentee ballot by mail.

Residents may register to vote at
any time on myvote.wi.gov

IMPORTANT REMINDERS

- Proof of residency is required
to register to vote.
- Photo ID is required to vote
in-person.
- Photo ID must be on file to
receive an absentee ballot by mail

For more information on voter
registration, absentee voting,
acceptable proof of residency,
acceptable photo ID, or how to
obtain a free photo ID visit the
Clerk's page at www.neenahwi.gov

Call the Clerk's Office at
920-886-6110 with any questions.



For more information, visit neenahhistoricalsociety.com

Ladysmith: The Husbands and Homes of Isabel Johnson

Feb 15, 7pm

At the Neenah Public Library

Spend the evening exploring
the life of Isabel Johnson
with Associate Director, Erica
Suchyta and Florence Bruno.
Isabel Bacon-Rogers was a
divorced mother when she
married America's wealthiest
widower, Charles R. Smith
of Menasha Woodenware.
Learn about Isabel's passion
for men, architecture and the
finer things in life.

PUBLIC WORKS

Tullar Drop-Off Site Closed January and February

The large item and metal drop-off
site at the Tullar Road Garage will
again be closed during the months
of January and February. Service
will resume on weekdays in March.
Residents will still be able to drop
off recycling and cardboard during
January and February, but the dump-
sters will be moved into the main
gate area near the gas pumps.
For more information, contact
the Public Works Department at
920-886-6240 or the Tullar Road
Garage at 920-886-6260.

2024 Drop-Off Site Punch Cards

The 2024 Drop-Off Punch Cards will
be mailed the third week of February
2024 to residents living in single
family, two-family, three-family, and
four-family residencies. **The color
of the 2024 card will be a bright
orange. Reminder that this card is
mailed separately and can look like
junk mail.** Also, the punch card is not
a forwardable piece of mail so resi-
dents that leave for the winter please
contact the Public Works Department
to be added to the "Snowbird" list.
Residents on this list will have their
card mailed the second week of April
unless an alternate mailing date has
been provided.

Exhibitions

FRESH PICKS: A SELECTION OF RECENT ACQUISITIONS

Through Jan 1, 2024

Bergstrom-Mahler Museum of Glass is excited to announce an exhibition of new acquisitions to the museum's permanent collection. This exhibition continues the museum's tradition of regularly celebrating the philanthropy of our generous donors of artwork.

Wes Hunting & Hunting Studio
Glass Exhibition



WES HUNTING & HUNTING STUDIO GLASS EXHIBITION

Through Feb 4, 2024

Wisconsin-based artist Wes Hunting creates blown and cast glass vessels and sculpture featuring colorful palettes and murrine inspired by past and present creations of artists working in Murano, Italy.

STAFF PICKS: SELECTIONS FROM THE PERMANENT COLLECTION

Through Apr 21, 2024

Bergstrom-Mahler Museum of Glass is home to more than 5,000 works of art in glass. This exhibition features works hand-curated by fourteen members of the museum's staff.



December Events

GLASS STUDIO CLASS: WINE GLASS CHARMS

Thu, Dec 7, 5:30–7:30pm

Tue, Dec 12, 5:30–7:30pm

Cost: \$45

Instructor: Riley Seib

Create your own set of wine glass charms for the holiday season. We all know the holiday season is full of fun parties – add your own creative twist! In this class, you'll be able to create 6 unique wine glass charms. After creating your charms, they will be fired in the kiln, attached to either gold or silver rings that will easily fit around the stems of wine glasses. Pieces will be fired and glued then ready for pick up about 2 weeks later.

GLASS STUDIO CLASS: FLAMEWORKED UTENSILS

Sat, Dec 9, 10am–1pm

Cost: \$60

Use the basics of beadmaking to create your own unique handle for utensils. Students will learn how to



work safely with hot glass and create a large bead that will be attached to a kitchen utensil. One previous flameworking class encouraged.

SPARK! MEMORY LOSS PROGRAM

Tue, Dec 12, 10:30am–12 noon

Tue, Jan 9, 10:30am–12 noon

Cost: Free

Instructor: Taylor Moeller-Roy & Kourtney Kositzke

SPARK! is a cultural program for people with early- to mid-stage memory loss and their care partners.

Art Activity Days

FIRST SATURDAY OF EVERY MONTH

Sat, Dec 2, 10am–3pm
Sat, Jan 6, 10am–3pm
Sat, Feb 3, 10am–2pm



Instructors:
Taylor Moeller-Roy &
Kourtney Kositzke

A tradition for over eight years! On the first Saturday of each month we offer a unique special project, always for \$15. In addition, we offer free projects for people to create in our galleries. Projects take about 30 minutes to create and are designed for all ages. All materials and instructions are supplied, and the Glass Studio will fire your project in the kiln.



GLASS STUDIO CLASS: CANDLE SCREEN

Thu, Jan 11, 5:30–8:30pm

Cost: \$65

Instructor: Sara Rezin

Create your own decorative color screen to place in front of candles. After fusing, the pieces will be slumped to create a standing single curve. The effect of the transparent glass in front of the light of the candle will produce a perfect decoration. Pieces will be fired and returned about two weeks later. Final piece size- 6x12". All experience levels.

GLASS STUDIO CLASS: PAINT A PINT GLASS

Tue, Dec 19, 5:30–8:30pm

Cost \$35

Instructor: Taylor Moeller-Roy

Create your own usable pint glass! Create a gift for someone you love or a treat for yourself. Learn how to use paints to create your own image either free hand or with a stencil. Pieces will be finished to ensure they are food safe.

January Events

GLASS STUDIO CLASS: GARDEN YARD ART

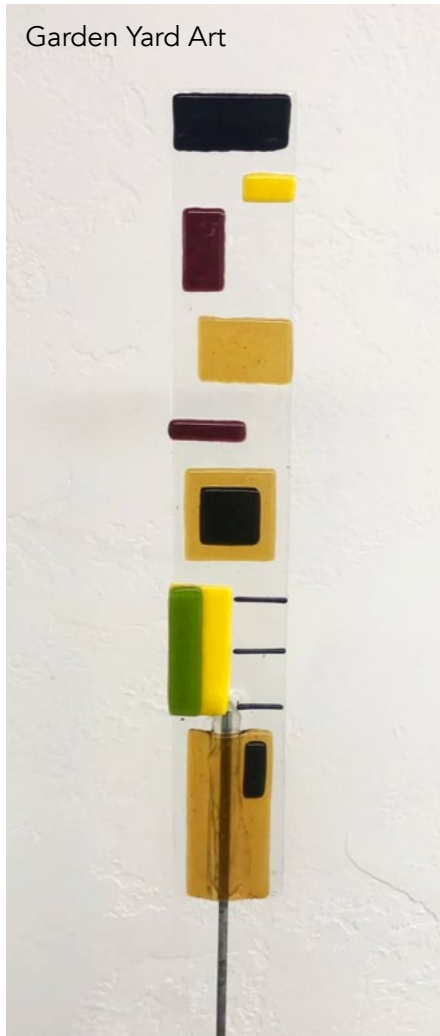
Tue, Jan 4,
5:30–8:30pm

Cost: \$63

Instructor: Taylor Moeller-Roy

Add some color to your yard or garden! Participants will create a work of art out of glass that will then be fused in a kiln. Afterwards, we will attach a metal rod which will make it perfect for a potted plant, the garden, or even in the yard! Final piece size - 4x11" glass and 18" metal rod. All experience levels.

Garden Yard Art



GLASS STUDIO CLASS: REACTIVE CLASS

Sat, Jan 13, 10am–1pm

Cost: \$58

Instructor: Sara Rezin

When adding silver foil to kiln formed glass, a riot of effects can occur. Students will learn how to create reactions like color changes and halo effects using specific reactive glass and silver foil. Final piece size – 6.5x6.5" or 4x11". All experience levels.

GLASS STUDIO CLASS: SHAPED GLASS JEWELRY

Tue, Jan 16, 5:30–8:30pm

Cost: \$40

Instructor: Sara Rezin

Transform a piece of dichroic fused glass into a beautiful heart, round, oval or leaf shaped pendant. You will learn to shape a piece of dichroic fused glass using a diamond grinder, and to drill holes in glass using a drill press. Wire wrapping techniques for hanging or embellishing your glass

pendant will also be covered. Final piece size – 3-4 pieces of jewelry as big as 2x2". All experience levels.



**FAMILY GLASS STUDIO CLASS:
SNOWMAN FAMILY PORTRAIT**

Thu, Jan 18, 5–8pm

Cost: \$75

Instructor: Riley Seib

Make your own curved display with a family of snowmen! Learn about different ways to make snowmen in fused glass. Participants will create a family of snow people in a winter wonderland. The pieces will be slumped after firing, to stand up on their own and be a great decoration all season long. Final piece size – 7x12". All experience levels.



**GLASS STUDIO CLASS:
HOT SCULPTED PAPERWEIGHTS**

Sat, Jan 20, 12 noon–5pm

Cost: \$200

Instructor: Taylor Moeller-Roy

Learn how to make your own unique glass paperweight! A trained instructor will walk you through step by step to make your own paper-

weight in our new mini dragon. Our mini dragon holds 15 lbs of molten glass and includes a reheating chamber. You'll learn how to safely utilize the equipment and glass blowing tools to design then sculpt a paperweight. After it is cooled down and coldworked to get rid of any sharp edges, you'll receive your piece back in about a week.

Final piece size ~2-3" in diameter

All experience levels.

**So much more in store this
winter from YOUR museum!**
Visit bmmglass.com
for details.

February Events

GLASS STUDIO CLASS: SEASCAPE

Thu, Feb 8, 5:30–8:30pm

Cost: \$75

Instructor: Sara Rezin

Create a free-standing curved glass seascape. Students will create a glass piece that will be gently curved and be able to stand on its own after firing, perfect for using as a candle stand or for placing in a window to catch the light. Final piece size – 7x12". All experience levels.

GLASS STUDIO CLASS: CORAL BOWL

Thu, Feb 15, 5:30–8:30pm

Cost: \$50

Instructor: Sara Rezin

Design a bowl that looks like a piece of ocean coral. Students will learn to cut and arrange strips of colorful glass for fusing and slumping into a gorgeous bowl. After, we will fuse it in a kiln and then slump it to make it functional. Final piece size - ~6.5x6.5". All experience levels.

**GLASS STUDIO CLASS: DESIGNING
WITH NEGATIVE SPACE**

Sat, Feb 17, 10am–1pm

Cost: \$75

Instructor: Sara Rezin

Learn how to utilize the negative



space in your piece! A lot of artwork focuses on the design that fills the positive space but what if we utilizes the negative space in a creative way? Students will learn how to create a simple design that will be transformed after using negative space. Finished piece will be fused and slumped on an S-Curve mold. Final piece size- 12x7". All experience levels.

**GLASS STUDIO CLASS:
FUSED GLASS MOSAIC TRAY**

Tue, Feb 20, 5:30–8:30pm

Cost: \$55

Instructor: Sara Rezin

Create a beautiful fused mosaic tray. Colorful blocks of color are placed on a background sheet of glass, and the spaces between are filled with ground glass frit to give a mosaic and grout look. After fusing, your piece will be slumped into a soft tray shape. Final piece size- 6.5x6.5" or 4x11". All experience levels.

Scouts Nights

Tuesdays, Dec 5, Jan 2, Feb 6,
5:30–7pm

Cost: \$15 per participant

Instructor: Taylor Moeller-Roy

In this monthly program, scouts of all ages tour our galleries with a docent, then make their own fused glass sun catcher! The pieces will be fired and ready to pick up about a week later.



City of Neenah
211 Walnut Street
Neenah, WI 54956

PRSRT STD
U.S. POSTAGE
PAID
NEENAH WI
PERMIT NO. 2

Neenah Community Band Winter Concert "A Festive Holiday"

Sun, Dec 10, 3pm
At the Neenah High School Auditorium
FREE! 500 Rocket Way, Neenah

Washington Park Winter Festival

Sat, Jan 13, 11am–1pm
Activities include skating, sledding, hockey games/
contests, making s'mores, hot dogs, hot chocolate,
giveaways & more!

Where is Netti?

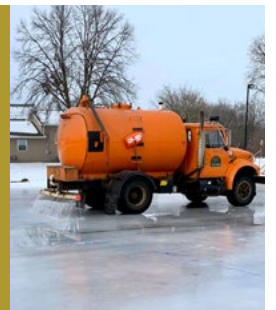
Jan 12–Feb 9, 2024
Netti, the Neenah Yeti, is hiding around the city
again this winter! We need your help finding him!
Visit www.neenahgov.org – Departments – Parks
& Recreation to find the **Netti Location and
Secret Code Sheet**.

See more fun winter
events from Parks &
Recreation on p. 11



**Emergency personnel need
your assistance!** Please clear
snow away from your fire
hydrant, or help a neighbor who
is unable to. If you are unable to
clear the snow yourself, please
call 920-886-6180.

Did you know, in order to get
ice rinks set, we need at least 6
inches of frost in the ground and
temperatures in the teens or
lower? Please keep this in mind
when you're wondering when
the rinks will be open.



2024 Neenah Arts Council Photo Contest!

Themes for 2024 are:

- Hometown Pride
- Mood/Emotion
- Creatively Enhanced

For info visit neenahlibrary.org

SUBMISSIONS WILL BE ACCEPTED MAR 1–MAR 31, 2024