

TOPOGRAPHIC AND BOUNDARY SURVEY

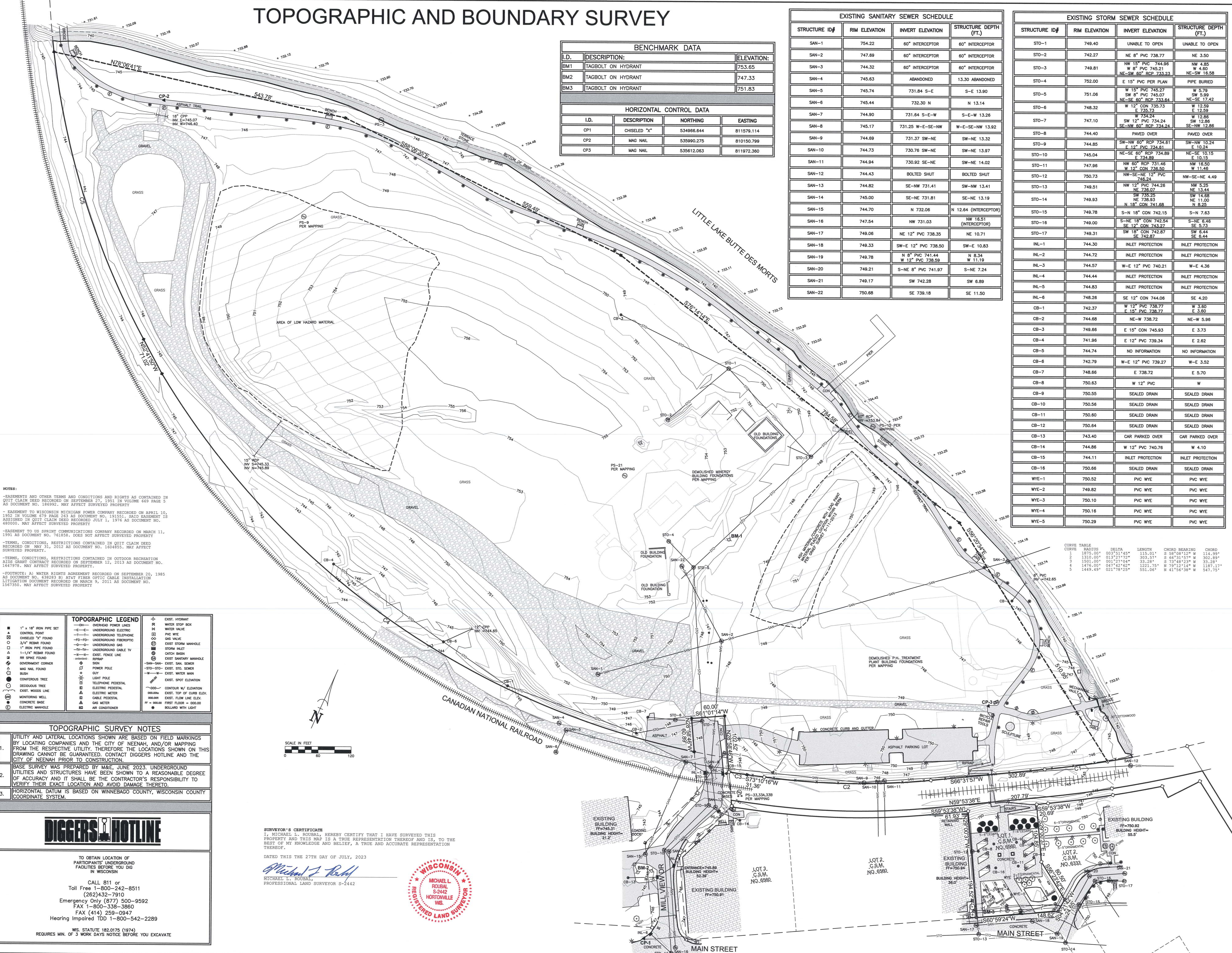
BENCHMARK DATA		
I.D.	DESCRIPTION:	ELEVATION:
BM1	TAGBOLT ON HYDRANT	753.65
BM2	TAGBOLT ON HYDRANT	747.33
BM3	TAGBOLT ON HYDRANT	751.83

HORIZONTAL CONTROL DATA			
I.D.	DESCRIPTION	NORTHING	EASTING
CP1	CHISELED "X"	534966.644	811579.114
CP2	MAG NAIL	535990.275	810150.799
CP3	MAG NAIL	535612.063	811972.360

EXISTING SANITARY SEWER SCHEDULE			
STRUCTURE ID#	RIM ELEVATION	INVERT ELEVATION	STRUCTURE DEPTH (FT.)
SAN-1	754.22	60" INTERCEPTOR	60" INTERCEPTOR
SAN-2	747.69	60" INTERCEPTOR	60" INTERCEPTOR
SAN-3	744.32	60" INTERCEPTOR	60" INTERCEPTOR
SAN-4	745.63	ABANDONED	13.30 ABANDONED
SAN-5	745.74	731.84 S-E	S-E 13.90
SAN-6	745.44	732.30 N	N 13.14
SAN-7	744.90	731.64 S-E-W	S-E-W 13.26
SAN-8	745.17	731.25 W-E-SE-NW	W-E-SE-NW 13.92
SAN-9	744.69	731.37 SW-NE	SW-NE 13.32
SAN-10	744.73	730.76 SW-NE	SW-NE 13.97
SAN-11	744.94	730.92 SE-NE	SE-NE 14.02
SAN-12	744.43	730.81 SE-NE	SE-NE 13.62
SAN-13	744.82	731.41 SE-NE	SE-NE 13.41
SAN-14	745.00	731.81 SE-NE	SE-NE 13.19
SAN-15	744.70	N 732.06	N 12.64 (INTERCEPTOR)
SAN-16	747.54	NW 731.03	NW 16.51 (INTERCEPTOR)
SAN-17	749.06	NE 12" PVC 738.35	NE 10.71
SAN-18	749.33	SW-E 12" PVC 738.50	SW-E 10.83
SAN-19	749.78	N 8" PVC 741.44 W 12" PVC 738.59	N 8.34 W 11.19
SAN-20	749.21	S-NE 8" PVC 741.97	S-NE 7.24
SAN-21	749.17	SW 742.28	SW 6.89
SAN-22	750.68	SE 739.18	SE 11.50

EXISTING STORM SEWER SCHEDULE			
STRUCTURE ID#	RIM ELEVATION	INVERT ELEVATION	STRUCTURE DEPTH (FT.)
STO-1	749.40	UNABLE TO OPEN	UNABLE TO OPEN
STO-2	742.27	NE 8" PVC 738.77	NE 3.50
STO-3	749.81	NW 15" PVC 744.96 W 8" PVC 745.21 NE-SW 60" RCP 733.23	NW 4.80 W 4.80 NE-SW 16.58
STO-4	752.00	E 15" PVC PER PLAN	PIPE BURIED
STO-5	751.06	W 15" PVC 745.27 SW 6" PVC 745.07 NE-SE 60" RCP 733.64	W 5.79 SW 5.99 NE-SE 17.42
STO-6	748.32	W 12" CON 735.73 E 735.73	W 12.58 E 12.59
STO-7	747.10	W 754.24 SW 12" PVC 734.24 SE-NW 60" RCP 734.24	W 12.86 SW 12.86 SE-NW 12.86
STO-8	744.40	PAVED OVER	PAVED OVER
STO-9	744.85	SW-NW 60" RCP 734.61 E 12" PVC 734.61	SW-NW 10.24 E 10.24
STO-10	745.04	NE-SE 60" RCP 734.89 E 734.89	NE-SE 10.15 E 10.15
STO-11	747.98	NW 60" RCP 731.46 W 12" CON 736.50	NW 16.50 W 11.46
STO-12	750.73	NW-SE 12" PVC 746.24	NW-SE-NE 4.49
STO-13	749.51	NW 12" PVC 744.26 NE 748.07	NW 5.25 NE 13.44
STO-14	749.93	SW 735.25 NE 738.93 N 18" CON 741.68	SW 14.88 NE 11.00 N 8.29
STO-15	749.78	S-N 18" CON 742.15	S-N 7.83
STO-16	749.00	S-NE 18" CON 742.54 SE 12" CON 743.27	S-NE 8.46 SE 3.73
STO-17	749.31	SW 18" CON 742.87 SE 742.87	SW 6.44 SE 6.44
INL-1	744.30	INLET PROTECTION	INLET PROTECTION
INL-2	744.72	INLET PROTECTION	INLET PROTECTION
INL-3	744.57	W-E 12" PVC 740.21	W-E 4.36
INL-4	744.44	INLET PROTECTION	INLET PROTECTION
INL-5	744.83	INLET PROTECTION	INLET PROTECTION
INL-6	748.28	SE 12" CON 744.06	SE 4.20
CB-1	742.37	W 12" PVC 738.77 E 15" PVC 738.77	W 3.60 E 3.60
CB-2	744.68	NE-W 738.72	NE-W 5.96
CB-3	749.66	E 15" CON 745.93	E 3.73
CB-4	741.96	E 12" PVC 739.34	E 2.62
CB-5	744.74	NO INFORMATION	NO INFORMATION
CB-6	742.79	W-E 12" PVC 739.27	W-E 3.52
CB-7	746.66	E 738.72	E 5.70
CB-8	750.63	W 12" PVC	W
CB-9	750.55	SEALED DRAIN	SEALED DRAIN
CB-10	750.56	SEALED DRAIN	SEALED DRAIN
CB-11	750.60	SEALED DRAIN	SEALED DRAIN
CB-12	750.64	SEALED DRAIN	SEALED DRAIN
CB-13	743.40	CAR PARKED OVER	CAR PARKED OVER
CB-14	744.86	W 12" PVC 740.76	W 4.10
CB-15	744.11	INLET PROTECTION	INLET PROTECTION
CB-16	750.66	SEALED DRAIN	SEALED DRAIN
WYE-1	750.52	PVC WYE	PVC WYE
WYE-2	749.82	PVC WYE	PVC WYE
WYE-3	750.10	PVC WYE	PVC WYE
WYE-4	750.16	PVC WYE	PVC WYE
WYE-5	750.29	PVC WYE	PVC WYE

CURVE	RADIUS	DELTA	LENGTH	CHORD BEARING	CHORD
1	1875.00'	003°31'45"	115.01'	S 58°08'12" W	114.99'
2	1310.00'	013°27'12"	303.97'	S 66°15'17" W	302.89'
3	1501.00'	001°27'04"	33.28'	S 73°48'23" W	33.28'
4	1476.00'	007°42'45"	122.75'	N 79°12'14" W	119.71'
5	1449.49'	021°78'25"	551.06'	N 41°56'13" W	547.75'



NOTES:
 -EASEMENTS AND OTHER TERMS AND CONDITIONS AND RIGHTS AS CONTAINED IN QUIT CLAIM DEED RECORDED ON SEPTEMBER 27, 1951 IN VOLUME 669 PAGE 5 AS DOCUMENT NO. 19692, MAY AFFECT SURVEYED PROPERTY.
 - EASEMENT TO WISCONSIN MICHIGAN POWER COMPANY RECORDED ON APRIL 10, 1952 IN VOLUME 679 PAGE 263 AS DOCUMENT NO. 19151, SAID EASEMENT IS ASSIGNED IN QUIT CLAIM DEED RECORDED JULY 1, 1976 AS DOCUMENT NO. 480000, MAY AFFECT SURVEYED PROPERTY.
 -EASEMENT TO US SPRINT COMMUNICATIONS COMPANY RECORDED ON MARCH 11, 1991 AS DOCUMENT NO. 761839, DOES NOT AFFECT SURVEYED PROPERTY.
 -TERMS, CONDITIONS, RESTRICTIONS CONTAINED IN QUIT CLAIM DEED RECORDED ON MAY 31, 2012 AS DOCUMENT NO. 1604855, MAY AFFECT SURVEYED PROPERTY.
 -TERMS, CONDITIONS, RESTRICTIONS CONTAINED IN OUTDOOR RECREATION AIDS GRANT CONTRACT RECORDED ON SEPTEMBER 12, 2013 AS DOCUMENT NO. 1447879, MAY AFFECT SURVEYED PROPERTY.
 -FOOTNOTE: A) WATER RIGHTS AGREEMENT RECORDED ON SEPTEMBER 20, 1985 AS DOCUMENT NO. 638283 B) A747 FIBER OPTIC CABLE INSTALLATION LITIGATION DOCUMENT RECORDED ON MARCH 9, 2011 AS DOCUMENT NO. 1567350, MAY AFFECT SURVEYED PROPERTY.

TOPOGRAPHIC LEGEND				
■	1" x 18" IRON PIPE SET	○	EXIST. HYDRANT	
□	CONTROL POINT	○	WATER STOP BOX	
○	CHISELED "X" FOUND	○	WATER VALVE	
○	3/4" REBAR FOUND	○	PVC WYE	
○	1" IRON PIPE FOUND	○	WATER METER	
○	1" IRON PIPE FOUND	○	EXIST. STORM MANHOLE	
○	1-1/4" REBAR FOUND	○	STORM ALLET	
○	GOVERNMENT CORNER	○	GATCH BASIN	
○	MAG NAIL FOUND	○	EXIST. SANITARY MANHOLE	
○	BUSH	○	EXIST. SANI. SEWER	
○	CONTOUR TREE	○	EXIST. STIC. SOWER	
○	DECIDUOUS TREE	○	EXIST. WATER MAIN	
○	EXIST. WOODS LINE	○	EXIST. SPOT ELEVATION	
○	MONITORING WELL	○	CONTOUR W/ ELEVATION	
○	CONCRETE BASE	○	900.000	EXIST. TOP OF CURB ELEV.
○	ELECTRIC MANHOLE	○	900.000	EXIST. FLOW LINE ELEV.
○		○	FF = 000.000	FIRST FLOOR = 000.000
○		○	○	○

TOPOGRAPHIC SURVEY NOTES

- UTILITY AND LATERAL LOCATIONS SHOWN ARE BASED ON FIELD MARKINGS BY LOCATING COMPANIES AND THE CITY OF NEENAH, AND/OR MAPPING FROM THE RESPECTIVE UTILITY. THEREFORE THE LOCATIONS SHOWN ON THIS DRAWING CANNOT BE GUARANTEED. CONTACT DIGGERS HOTLINE AND THE CITY OF NEENAH PRIOR TO CONSTRUCTION.
- BASE SURVEY WAS PREPARED BY M&L, JUNE 2023. UNDERGROUND UTILITIES AND STRUCTURES HAVE BEEN SHOWN TO A REASONABLE DEGREE OF ACCURACY AND IT SHALL BE THE CONTRACTOR'S RESPONSIBILITY TO VERIFY THEIR EXACT LOCATION AND AVOID DAMAGE THERETO.
- HORIZONTAL DATUM IS BASED ON WINNEBAGO COUNTY, WISCONSIN COUNTY COORDINATE SYSTEM.

DIGGERS HOTLINE

TO OBTAIN LOCATION OF PARTICIPANTS' UNDERGROUND FACILITIES BEFORE YOU DIG IN WISCONSIN

CALL 811 or Toll Free 1-800-242-8511 (262)432-7910
 Emergency Only (877) 500-9592
 FAX 1-800-338-3860
 FAX (414) 259-0947
 Hearing Impaired TDD 1-800-542-2289

WS. STATUTE 182.0175 (1974)
 REQUIRES MIN. OF 3 WORK DAYS NOTICE BEFORE YOU EXCAVATE

SURVEYOR'S CERTIFICATE

I, MICHAEL L. ROUBAL, HEREBY CERTIFY THAT I HAVE SURVEYED THIS PROPERTY AND THIS MAP IS A TRUE REPRESENTATION THEREOF AND IS, TO THE BEST OF MY KNOWLEDGE AND BELIEF, A TRUE AND ACCURATE REPRESENTATION THEREOF.

DATED THIS 27TH DAY OF JULY, 2023

Michael L. Roubal
 MICHAEL L. ROUBAL,
 PROFESSIONAL LAND SURVEYOR S-2442

WISCONSIN REGISTERED LAND SURVEYOR
 MICHAEL L. ROUBAL
 S-2442
 HORTONVILLE
 WIS.

Martenson & Eisele, Inc.
 1377 Midway Road
 Meenasha, WI 54952
 Environmental
 Engineering
 info@martenson-eisele.com
 920.731.0381 1.800.236.0381

TOPOGRAPHIC SURVEY
ARROWHEAD PARK
CITY OF NEENAH, WINNEBAGO COUNTY, WISCONSIN

SCALE: DATE
 BARS/SCALE: JUNE 2023
 COMPUTER FILE
 1-1076-002/TOPO.DWG

DRAWING NO
 1-1076-002

FIELDWORK APPROVED CHECKED BY: MLR
 NO. DATE NO. DATE NO. DATE NO. DATE